

## LTC LUT11 LED Area Light

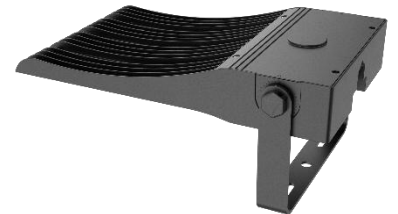
### Applications

- Parking lots
- Small sports fields
- Industrial and Perimeter lighting
- Hard stand lighting



### Electrical Information

- Models: LUT11-180 / 240 / 300 / 450 / 600
- Power Consumption ( $\pm 5\%$ ): 180W, 240W, 300W, 450W, 600W
- Input Voltage: 120–240VAC, 50/60Hz
- Power Factor:  $>0.93$
- Surge Protection: 6kV line-line, 10kV line-earth
- Driver Type: Constant Current (CC)
- Control: 1–10V dimming, DALI, Photocell

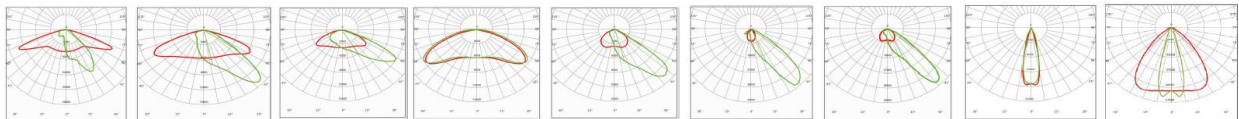


### Optical Information

- LED Type: 5050
- Luminous Flux ( $\pm 10\%$ ): 27,000 lm / 36,000 lm / 45,000 lm / 67500lm/90000LM
- Efficacy (5000K Ra70): up to 140 lm/W
- CCT: 5000K (3000K, 4000K optional)
- CRI: Ra70
- Beam Angles:

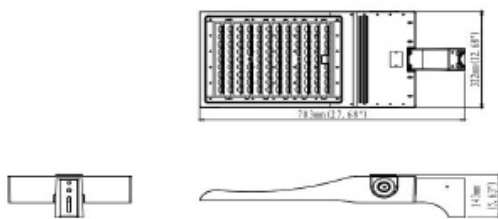


LS10502, LS10503, LS10504, LS10505, LS10506, LS10507, LS10508, LS10533, LS10564

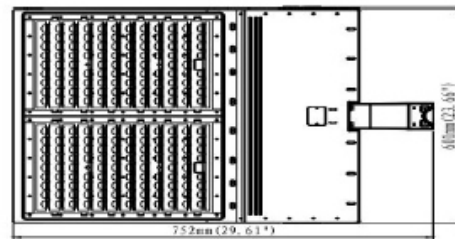


## Mechanical & Construction

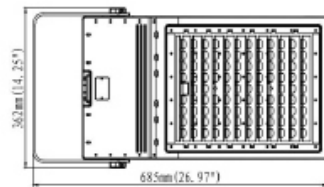
- Product Dimensions: 571×322×94 mm (180–300W), 621x601x104mm (450-600W)
- Net Weight: 180W/240W=7.8kg ; 300W=8.4kg; 450W=16.5kg; 600W=18kg
- Housing Material: Aluminum alloy
- Finish: Powder coating with anti-corrosion treatment
- Fixture Color: Black or Bronze
- Mounting Options: Post top, side entry, straight arm, wall, pole mount



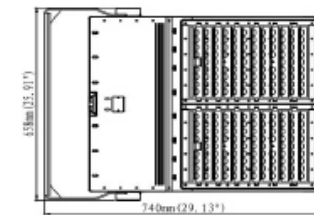
**Straight Arm Mounting 180W/240W/300W**



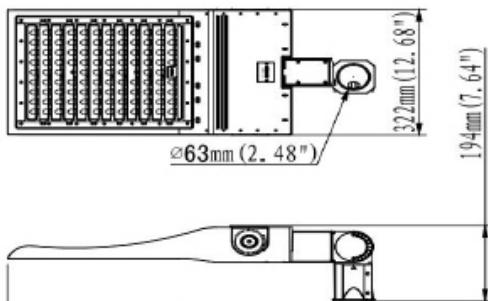
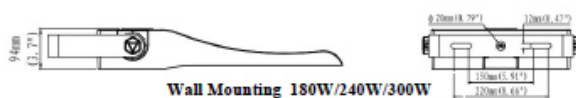
**Straight Arm Mounting 450W 600W**



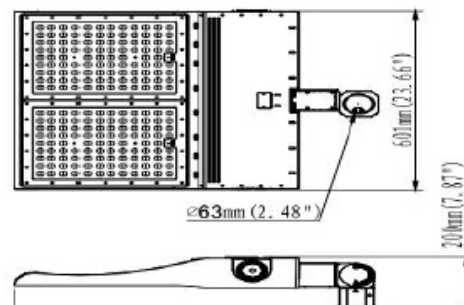
**Wall Mounting 180W/240W/300W**



**Wall Mounting 450W/600W**



**Slipfitter Mounting 180W/240W/300W**



**Slipfitter Mounting 450W/600W**

## Ratings & Performance

- IP Rating: IP66
- IK Rating: IK10
- Corrosion Category: C3 (ISO 9223:2012)
- EPA: 2.37 ft<sup>2</sup> (small)

## Lifetime & Warranty

- Operating Temperature: -30°C to +50°C
- LED Lifetime @ Ta=25°C: L90 49,000 hrs / L80 110,000 hrs / L70 180,000 hrs
- Warranty: 5 Years •

## Accessories (Optional)

- Photocell (NEMA socket: 3-pin / 5-pin / 7-pin)
- House-side shield for back light control
- Straight arm, slip fitter, wall mount, pole mount adaptors



PC Optic Lens



House-side Shield  
PC Material for back light  
control



Pole Mount Adaptor for  
dia.60mm/76mm/89mm pole.



Post Top mounting



Straight arm mounting



Side entry mounting